



Sixth Form @ Formby High School

**DREAM IT. DO IT.**  
*Your future starts here!*



**PARENTS'  
GUIDE**





# WELCOME ABOARD

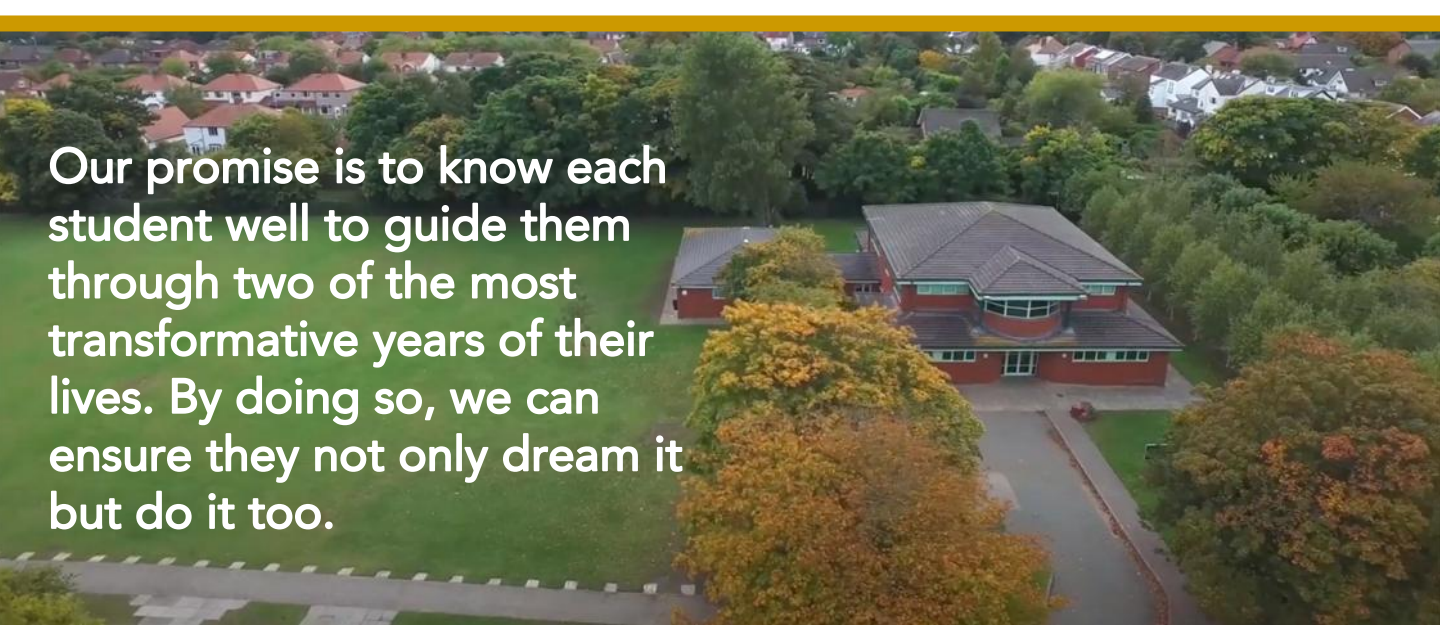
**Mrs A Harrison-Forsyth**  
**Assistant Headteacher**  
**Director of Learning Year 11-13 &**  
**Attendance**



We are delighted your child is looking to enrol in Sixth Form @ Formby High School. Making choices for the end of Year 11 can sometimes be worrying; to assist you in providing support for your son/daughter, we have put this guide together to help you navigate their next steps with us. The guide will contain information about our pastoral support, the ways in which we will keep in touch and an overview of the Personal Development Programme we run.

We believe passionately in developing the whole individual at Sixth Form. As such, although academic achievement is crucial, we have a focus on supporting the development of personal wellbeing too. We have a dedicated Sixth Form Team of five situated in the heart of the Sixth Form Centre and a team of twelve tutors.

Our promise is to know each student well to guide them through two of the most transformative years of their lives. By doing so, we can ensure they not only dream it but do it too.





# GETTING SETTLED

Settling in to Sixth Form, whether joining from another school or moving across from main school can be daunting. We will do everything we can to make the transition to post-16 study as easy as possible to ensure our Year 12 students settle and adjust quickly.

This begins with a wide variety of activities students can engage in throughout Year 11 to familiarise themselves with Sixth Form Life. After enrolling, students will have a four-week monitoring period running through September to ensure they are on the right pathway, feel comfortable and do not get lost in the crowd.

If at any point, you have concerns about your child we would encourage you to contact a member of the Sixth Form Team to ensure necessary additional support is in place.



# MONITORING PROGRESS



We consistently monitor the progress of our students to ensure they are fulfilling their potential and intervene early where this is in doubt.

Across the two years, there will be five formal assessment points, following which robust interventions will be put in place reflecting the level of support needed by the individual. This may include subject specific targeted support, attending CCU (Compulsory Catch Up) to complete directed work with the support of our Student Development Leader, Mrs Halton, or could involve monitoring and mentoring by a member of the Sixth Form Team.

By being relentless in the pursuit of good progress, our students know we have high expectations of them and for them. This allows our students to have broad options for post-18 pathways. To encourage them to dream it and do it, there will be several Higher Education, Apprenticeship and Careers events throughout their time at Sixth Form.

Should you require any further information or want to discuss Sixth Form @ Formby High School please do not hesitate to contact a member of my team.

# TUTORS

Your child will have a tutor who will support them from their first day at Sixth Form through to the attending the Leavers Event Celebrations at the end of Year 13. They will meet with students for fifteen minutes each morning and therefore often are the first point of contact for our Sixth Formers. Our tutors will monitor attendance, deliver PD (Personal Development Programme) sessions and work to support students with their post-18 destinations.



# ATTENDANCE


Our students have made a choice to attend Sixth Form @ Formby High School and as such we expect them to attend and take their obligations to study seriously. Students should maintain an attendance of 96%. Students should attend tutor each day at 8:50am, with assembly taking place on Monday morning (for Year 12) and must ensure to attend all timetabled lessons including Enrichment. Where students have study periods, they can leave the school site and just need to sign out when doing so.

Our tutors will speak to students weekly about attendance and you will be contacted if they do not attend school. We do understand that sometimes absences cannot be prevented, and, in these cases, parents/guardians must contact Sixth Form to inform us of the reasons for the absence. This can be done via telephone: 01704 873100 or email: [sixthform@formbyhighschool.com](mailto:sixthform@formbyhighschool.com).

# MONITORING PROGRESS

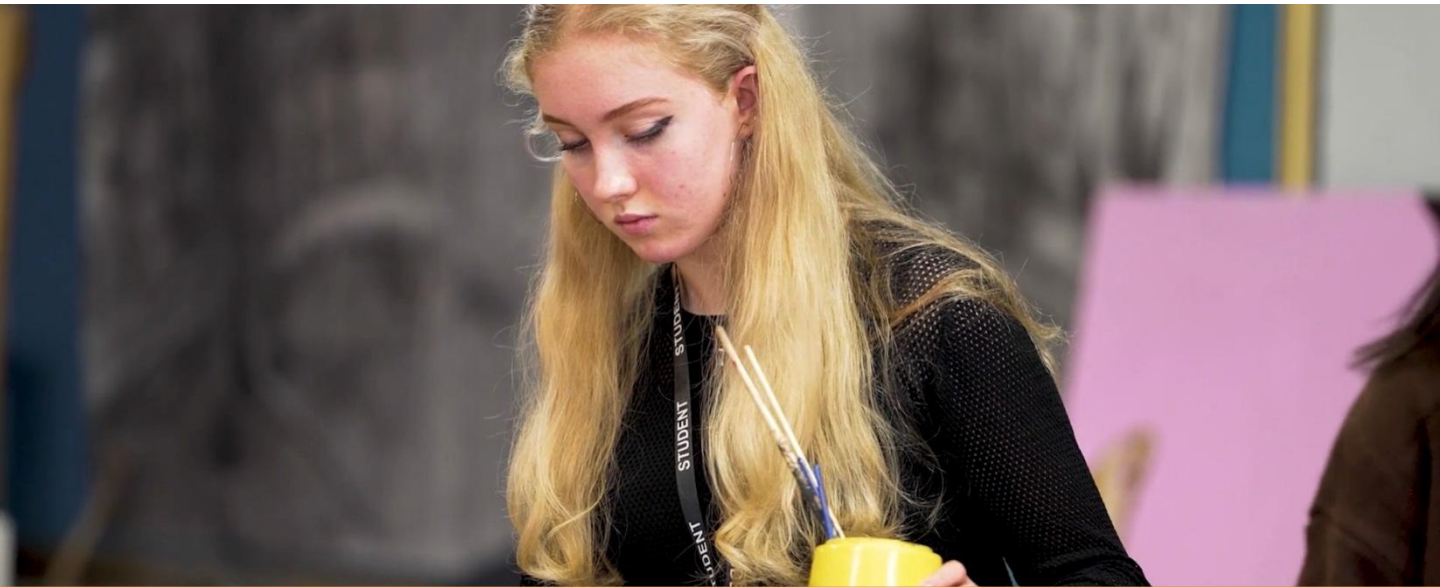


We operate a 'four-day week' with students in Year 12 attending school for lessons Monday through to Thursday. Friday is a private study day providing students with an opportunity to catch up, review and consolidate work from the week. They can do this work from home; however, we also encourage students to come in and study in the Sixth Form Centre, using the facilities we have available. Students are permitted to carry out work experience on their study day, but we would ask that students do not use it for paid work. Where there are concerns about progress, we reserve the right to ask students to attend school on this day to work with our Student Development Leader. It must also be noted that on occasion due to timetabling restraints, some subjects may have lessons on Friday.

MONDAY	TUESDAY	WEDNESDAY	THURSDAY	FRIDAY
Registration	Registration	Registration	Registration	
<b>Period 1</b>	<b>Period 1</b>	<b>Period 1</b>	<b>Period 1</b>	
<b>Period 2</b>	<b>Period 2</b>	<b>Period 2</b>	<b>Period 2</b>	
Break	Break	Break	Break	
<b>Period 3</b>	<b>Period 3</b>	<b>Period 3</b>	<b>Period 3</b>	
<b>Period 4</b>	<b>Period 4</b>	<b>Period 4</b>	<b>Period 4</b>	
Lunch	Lunch	Lunch	Lunch	
<b>Period 5</b>	<b>Period 5</b>	<b>Period 5</b>	<b>Period 5</b>	
Extra curricular	Extra curricular	Extra curricular	Extra curricular	

# STUDENT LANYARDS

For health, safety and safeguarding reasons, wearing a Lanyard is mandatory for everyone who is on the school site. Sixth Form students should wear their lanyard each day. They should also sign in when they arrive and then sign out (and back in) if leaving throughout the course of the day. If they do not have their lanyards, they will be asked to get temporary identification from the main reception for that day, even if this means leaving a lesson to do so.



# PARENTPAY

Parentpay provides the facility to add money to your child's account so they can buy food and refreshments from the school canteen and Sixth Form coffee bar. They are also able to use cash here but not in the main school canteen. You will receive an instruction email to set up your account if your child is new to the school. Please speak to our Finance Department if you experience any difficulties.

# ARBOR

Formby High School uses Arbor, and this continues into Sixth Form. You will be provided with a log in which will allow you access information such as your child's timetable, homework which has been set and receive important announcements from class teachers and the Sixth Form Team. Arbor can be accessed via web browser or can be downloaded as an app to a mobile or similar.



## POST-16 BURSARY

The Post-16 Bursary is available to students who meet the necessary criteria. If your annual household income is £25,000 or below, your child might be entitled to additional financial support throughout the year. This bursary is referred to as the discretionary bursary to reimburse for anything which contributes towards a child's studies. This could include travel claims, laptop provision, study resources, equipment, or support for interviews/open days.

The Mandatory Bursary, however, offers financial assistance for students who are in care, are care leavers, are in receipt of income support or disabled and in receipt of Employment and Support Allowance and Disability Living Allowance. Where necessary, you can also claim for one-off hardship support. All information about the Post-16 Bursary at Sixth Form can be found [here](#).

# CAREERING AHEAD

We have a dedicated Sixth Form Careers offer and students can make appointments to meet with Career Connect, our provider each week. These meetings provide advice for students on their options after Sixth Form as well as providing support with applying for jobs, apprenticeships, university and providing gap year opportunities. We also use Morrisby, an online platform, which provides a one-stop-shop for finding and comparing opportunities for post-18 pathways further enhancing the support students have in making the right choices for their next steps. Our Careers Programme is busy with several high-profile events in school across the two years as well as student involvement in local and national events. These do not focus solely on university but instead seek to provide broad understanding to help students find the right pathway for them. Work experience is becoming more important as all employers and many university courses expect candidates to have some form of practical experience. As such, we offer a full week of Careers Experience with students taking up opportunities in their chosen fields to help give them a real life understanding of the future. This is something we believe is fundamental for them and unique to us; even during the covid-19 pandemic, our students completed virtual work experience opportunities through SpringPod. Additionally, to this, we encourage students to volunteer during Enrichment time or take up vital work experience placements on their study day.



**Meet the Professionals**



# MOVING FORWARD

We launch our focus on post-18 pathways in Spring term of Year 12. For many of our students, this involves applying for university places. We strongly recommend that students attend university open days during the summer term in Year 12, although this do continue into the autumn term of Year 13 and will authorise these visits.

Additionally, our Student Development Leader will provide information about a variety of outreach activities taking place which we would encourage students to get involved in. All students will receive support on how to choose the right university and course for them, personal statement writing and student finance. We also provide the same sessions to parents to allow you to help and support your child in making decisions regarding their next steps.

Although most of the guidance will come from the Sixth Form Team, our tutor team will work closely with students as they finalise their applications. We will then subsequently provide further support for interviews, portfolios or auditions should this be required.

Our **High Flyers programme** is detailed in a separate document and provided information around the support and development of our highest ability students.





## BEYOND THE CLASSROOM

Academic outcomes are crucial at Sixth Form level. However, we believe that the two years in Sixth Form should develop our students in every possible way, not just academically. This is why we launched our FHS Baccalaureate programme, endorsed by the University of Liverpool, which brings together academic, enrichment and leadership strands of our Key Stage 5 curriculum. We encourage our students to be involved in a variety of activities and opportunities which will enhance them personally, socially, and emotionally throughout their time with us.

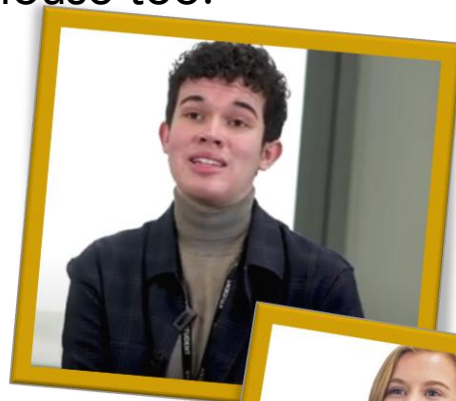
## TRIPS AND VISITS

There has been a broad range of Sixth Form visits throughout the years including within the UK and abroad. Historically these have included a Cultural Tour to Krakow, trips to Iceland, Geneva, and a ski trip. These larger scale trips will be advertised, and students should secure a place with a deposit. If you are in receipt of a bursary, then it is possible that funding could be secured to assist. Alongside these visits, subjects will run a variety of opportunities across the duration of the two years. There are theatre trips in English and Drama, museum visits in History and art gallery trips, university outreach activities in subjects like PE, Spanish and Music as well as a visit to the Houses of Parliament for our Politics students and fieldwork in Geography.



Our **Ambassador Programme** is designed to provide students with a range of valuable opportunities to make a positive and meaningful contribution to the wider life around our school and sixth form community.

We would encourage all students to become Ambassadors, especially given that it is great to put on a CV and in a personal statement. This is because Ambassadors are the school's role models and come with responsibility. In addition to this, we have a house system here at Formby and our Sixth Form students can apply for the roles of Head of House, Deputy and Assistant Head of House too.



To speak to one of our dedicated Sixth Form team, please contact us via email using the addresses below:



**Mrs A Harrison-Forsyth**  
Assistant Headteacher  
Director of Learning Year 11-13  
[a.harrison@formbyhighschool.com](mailto:a.harrison@formbyhighschool.com)



**Ms K Kearsley**  
Sixth Form Progress Leader  
[k.kearsley@formbyhighschool.com](mailto:k.kearsley@formbyhighschool.com)

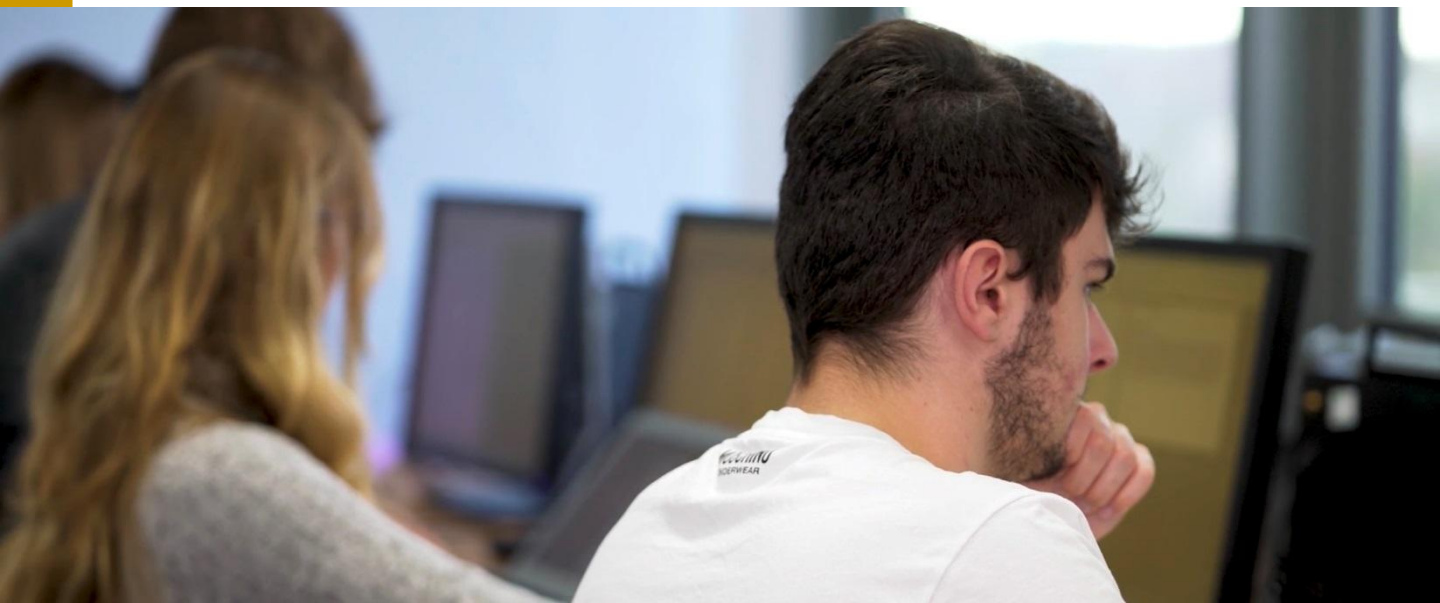


**Mr D Rigby**  
Sixth Form Progress Leader  
[d.rigby@formbyhighschool.com](mailto:d.rigby@formbyhighschool.com)



**Mrs B Halton**  
Student Development Leader  
[b.halton@formbyhighschool.com](mailto:b.halton@formbyhighschool.com)







Formby High School, Freshfield Road, Formby,  
Merseyside L37 3HW Tel. 01704 835659  
Email: [sixthform@formbyhighschool.com](mailto:sixthform@formbyhighschool.com)  
Website: [www.formbyhighschool.com](http://www.formbyhighschool.com)