

**TIMINGS OF THE DAY**

The Summer School day starts at 9.00am and ends at 3.00pm.

**ENTRANCE GATE**

Summer School students must enter the campus using the gate nearest the Sixth Form Centre at the Freshfield Road entrance.

**HAND WASHING HOT SPOT**

Summer School students should use the Sixth Form Centre toilets for hand washing.

**TOILETS**

Summer School students should use the toilets in the Sixth Form Centre.

**SANITISING STATIONS**

All students will hand sanitise at the school gates on arrival. Hand gel bottles are located across the school and in all classrooms.

**SUMMER SCHOOL BUBBLE LOCATION**

Summer School activities will be located mainly in the Sixth Form Centre, P Building, Creative Arts rooms and Sports Centre.

**EQUIPMENT CHECK**

Students must bring all stationery and equipment for classroom based lessons.



MORNING BREAK

Students may bring their own snacks. Students will be able to refill their water bottles.



LUNCHTIME

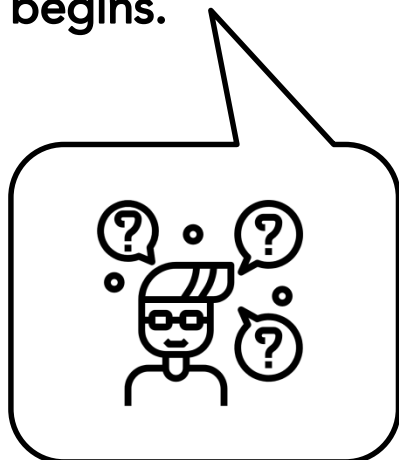
Packed lunches can be eaten in the Sixth Form Centre or outdoors space. The front field is also available for students over lunch and breaks.



CLOTHING

Students must attend Summer School in practical, comfortable clothes.

We encourage all parents to discuss the importance of the measures outlined here with their children before Summer School begins.



FORMBY HIGH SCHOOL CAMPUS MAP

