

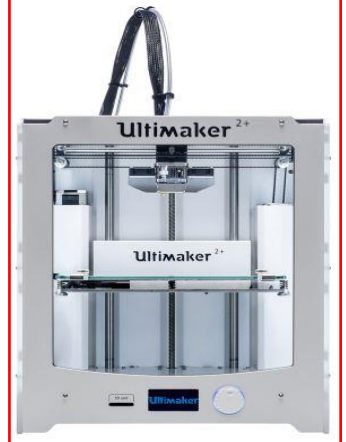
**The Brief:** You taking part in a work experience in an architecture firm. Your boss has challenged to develop a building with a specific function as part of a 'new city' development.

**The Task:** Use CAD, CAM to create your own individual building. You will need to consider both the exterior and interior designs. Which will include the architecture style you might like to use and detailed floor plans of the inside of your building.

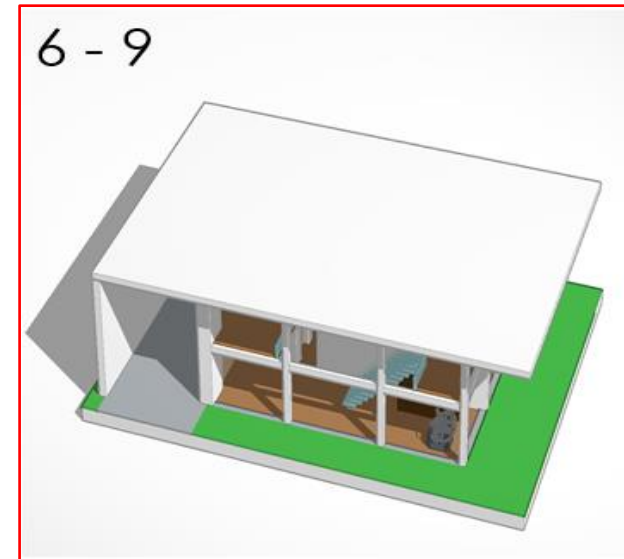
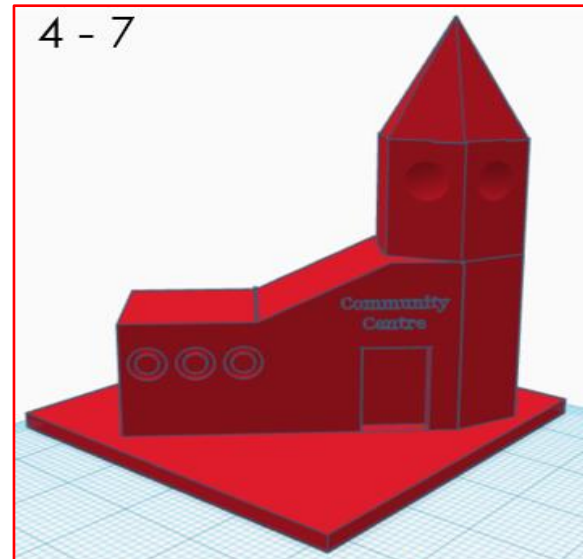
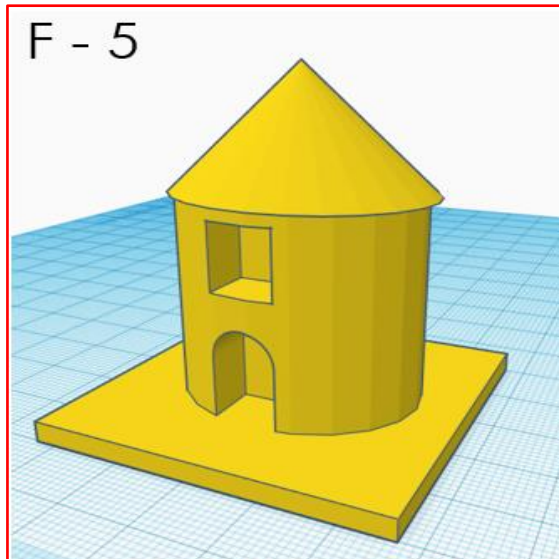
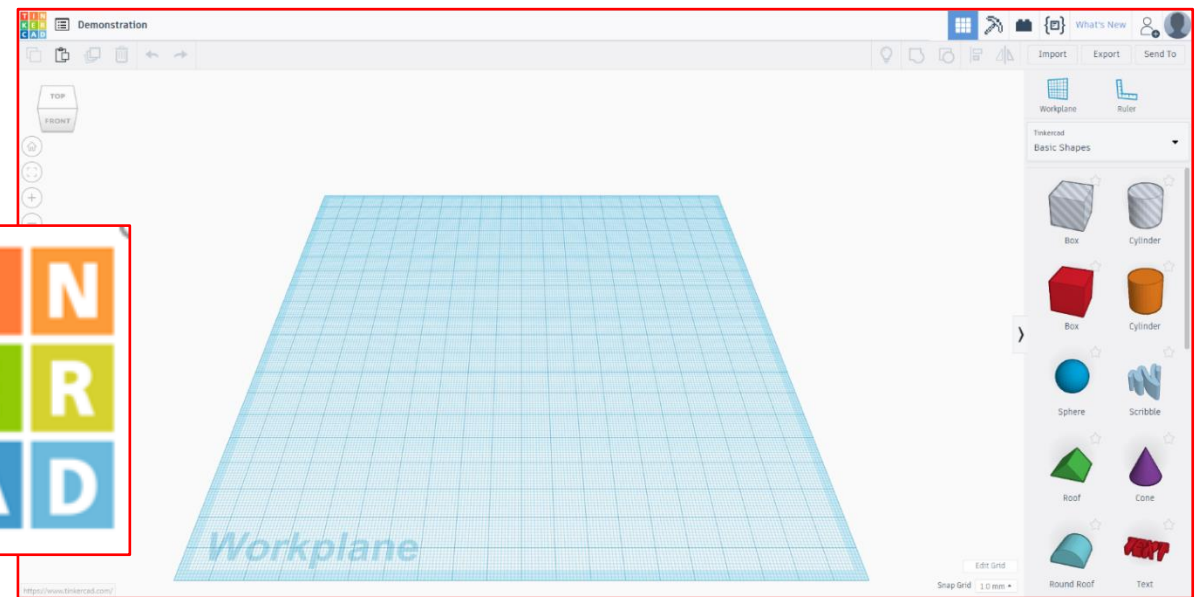
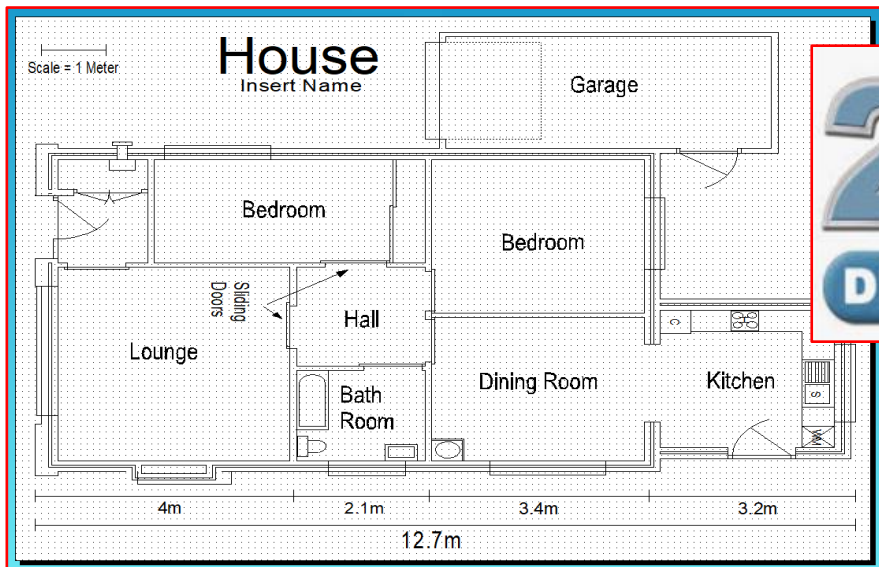
**The Design Criteria:** A list of targets that you set for yourself to achieve with your product.

**CAD CAM:**

2D design - CAD	Computer software for drawing flat parts
Tinkercad - CAD	Computer software for drawing 3D
3D printer - CAM	A machine which 3D prints using a biopolymer



**Materials: PLA** – polylactide is a biodegradable and bioactive thermoplastic derived from renewable resources, such as corn starch, cassava roots or sugarcane.



**Assessment:**  
60% Product and folder  
40% Exam



# Inspiration



Frank Lloyd Wright



Aires Mateus



Frank Gehry



Santiago Calatrava  
**Architecture**



Miranda do Corvo



Daniel Libeskind